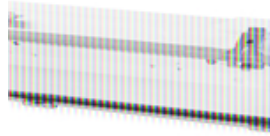




**SERIES RINO
FIXTURE
CODE 842862**



Datasheet

Lighting characteristics

Lamp power	2x80W
Optics type	WHITE PAINTED REFLECTOR
Optics	Symmetrical
Emergency function	-

Mechanical characteristics

Manufacturing material	Galvanized and painted steel
------------------------	------------------------------

Diffuser type	TRANSPARENT TEMPERED GLASS
IP Protection degree	IP66/IP67

Net Weight	8.484 KG
Working Environment Temp.	Min: -25°C ;Max: +50°C
Warehousing Temperature	Min: ;Max:

Electrical characteristics

Insulation Class	I
Supply Voltage	220V-240V 0/50/60Hz
Control system/dimming	Standard on-off
Power Supply Unit	Electronic
Lampholder type	G5
Light source type	T5
Hole type	M20

Reference Standards and Directives

Certification and approval marks	CE
----------------------------------	----

Directives	2009/125/EC (ERP), 2011/65/EU (RoHS), 2012/19/EU (WEEE), 2014/30/EU (EMC), 2014/35/EU (LVD)
------------	---

Reference Standards	EN 60598-1:2015, EN 60598-2-1:1989, EN 62493:2015, EN IEC 63000:2018
---------------------	--

Equipment Included

The images are purely indicative. The indicated values of luminous flux and declared power have tolerances of +/- 7%. Palazzoli reserves the right to make changes without notice.