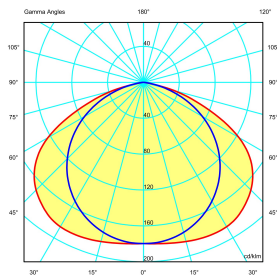
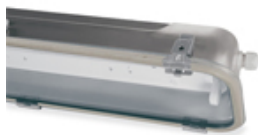




**SERIES RINO
FIXTURE
CODE 822762**



Datasheet

Lighting characteristics

| | |
|--------------------|-------------------------|
| Lamp power | 2x49W |
| Optics type | White reflector RAL9016 |
| Optics | Symmetrical |
| Emergency function | - |

Mechanical characteristics

| | |
|---------------------------|--------------------------------|
| Manufacturing material | Stainless steel AISI 304 |
| Treatment type | Natural finishing |
| Surface finishing | - |
| Colour | - |
| Diffuser type | TRANSPARENT TEMPERED GLASS |
| IP Protection degree | IP66/IP67 |
| Shock resistance | IK09 according to IEC/EN 62262 |
| Corrosivity category | C4 (ISO 12944) |
| Net Weight | 8.006 KG |
| Working Environment Temp. | Min: -25°C ;Max: +50°C |
| Warehousing Temperature | Min: -40°C ;Max: +70°C |

Electrical characteristics

| | |
|------------------------|---------------------|
| Insulation Class | I |
| Supply Voltage | 220V-240V 0/50/60Hz |
| Control system/dimming | Standard on-off |
| Power Supply Unit | Electronic |
| Lampholder type | G5 |
| Light source type | T5 |
| Hole type | M20 |
| Max conductor section | 2.5 mm ² |
| Tightening diameter | Min 7 mm; Max 14 mm |

Reference Standards and Directives

| | |
|----------------------------------|---|
| Certification and approval marks | UKCA, CE |
| Directives | 2009/125/EC (ERP), 2011/65/EU (RoHS), 2012/19/EU (WEEE), 2014/30/EU (EMC), 2014/35/EU (LVD), Reg. EU 2019/2020 (EcoDesign) |
| Reference Standards | EN 55015:2013, EN 60598-1:2015, EN 60598-1:2015/A1:2018, EN 60598-1:2015/AC:2015, EN 60598-1:2015/AC:2016, EN 60598-1:2015/AC:2017, EN 60598-2-1:1989, EN 61000-3-2:2014, EN 61000-3-3:2013, EN 61547:2009, EN 62311:2008, EN 62493:2015, EN IEC 63000:2018 |

Equipment Included -

The images are purely indicative. The indicated values of luminous flux and declared power have tolerances of +/- 7%. Palazzoli reserves the right to make changes without notice.