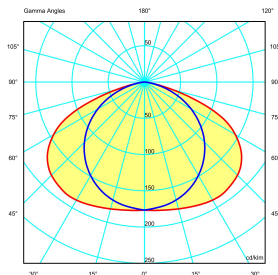
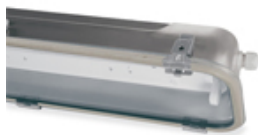




**SERIES RINO  
LINEAR FIXTURE  
CODE 822331**



### Datasheet

#### Lighting characteristics

Lamp power	1x58W
Optics type	White reflector RAL9016
Optics	Symmetrical
Emergency function	-

#### Mechanical characteristics

Manufacturing material	Stainless steel AISI 304
Treatment type	Natural finishing
Surface finishing	-
Colour	-
Diffuser type	TRANSPARENT TEMPERED GLASS
IP Protection degree	IP66/IP67
Shock resistance	IK09 according to IEC/EN 62262
Corrosivity category	C4 (ISO 12944)
Net Weight	9.619 KG
Working Environment Temp.	Min: -25°C ;Max: +50°C
Warehousing Temperature	Min: -40°C ;Max: +70°C

#### Electrical characteristics

Insulation Class	I
Supply Voltage	220V-240V 0/50/60Hz
Control system/dimming	Standard on-off
Power Supply Unit	Electronic
Lampholder type	G13
Light source type	T8
Hole type	M20
Tightening diameter	Min 7 mm; Max 14 mm

#### Reference Standards and Directives

Certification and approval marks	UKCA, CE
Directives	2009/125/EC (ERP), 2011/65/EU (RoHS), 2012/19/EU (WEEE), 2014/30/EU (EMC), 2014/35/EU (LVD), Reg. EU 2019/2020 (EcoDesign)
Reference Standards	EN 55015:2013, EN 60598-1:2015, EN 60598-1:2015/A1:2018, EN 60598-1:2015/AC:2015, EN 60598-1:2015/AC:2016, EN 60598-1:2015/AC:2017, EN 60598-2-1:1989, EN 61000-3-2:2014, EN 61000-3-3:2013, EN 61547:2009, EN 62311:2008, EN 62493:2015, EN IEC 63000:2018

Equipment Included -

The images are purely indicative. The indicated values of luminous flux and declared power have tolerances of +/- 7%. Palazzoli reserves the right to make changes without notice.