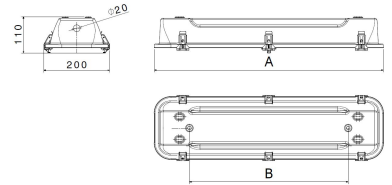
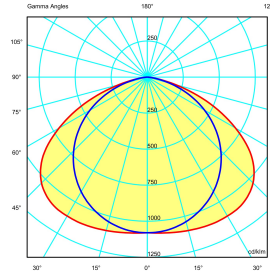
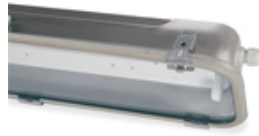




**SERIES RINO  
FIXTURE  
CODE 822211**



Tipo Lampada (W)	A (mm)	B (mm)
18W T8 - 24W T5 - Led	600	480
36W T8-28 + 54W T5 - Led	1300	1090
54W T8-35, 49 e 80W T5 - Led	1600	1395



### Datasheet

#### Lighting characteristics

Lamp power	(1+1)x36W
Optics type	White reflector RAL9016
Optics	Symmetrical
Emergency function	-

#### Mechanical characteristics

Manufacturing material	Stainless steel AISI 304
Treatment type	Natural finishing
Surface finishing	-
Colour	-
Diffuser type	TRANSPARENT TEMPERED GLASS
IP Protection degree	IP66/IP67
Shock resistance	IK09 according to IEC/EN 62262
Corrosivity category	Equivalent to C5-H (ISO 12944)
Net Weight	6.734 KG
Working Environment Temp.	Min: -25°C ;Max: +50°C
Warehousing Temperature	Min: -40°C ;Max: +70°C

#### Electrical characteristics

Insulation Class	I
Supply Voltage	220V-240V 0/50/60Hz
Control system/dimming	Standard on-off
Power Supply Unit	Electronic
Lampholder type	G13
Light source type	T8
Hole type	M20
Max conductor section	2.5 mm <sup>2</sup>
Tightening diameter	Min 7 mm; Max 14 mm

#### Reference Standards and Directives

Certification and approval marks	CE
Directives	2009/125/EC (ERP), 2011/65/EU (RoHS), 2012/19/EU (WEEE), 2014/30/EU (EMC), 2014/35/EU (LVD)
Reference Standards	EN 60598-1:2015, EN 60598-2-1:1989, EN 60598-2-22:2014, EN 62493:2015, EN IEC 63000:2018

Equipment Included -

The images are purely indicative. The indicated values of luminous flux and declared power have tolerances of +/- 7%. Palazzoli reserves the right to make changes without notice.