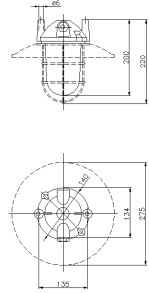




**SERIES RINO
WELL FIXTURE
CODE 810171**



Datasheet

Specifications

Net Weight	1.323 KG
Frequency	50/60Hz
IP Protection degree	IP65
Rated operating voltage	230V CA-CC
Manufacturing material	Aluminum alloy
Insulation Class	I
Lamp power	75W
Lampholder type	E27
Hole type	M20
Diffuser type	TRANSPARENT PRISMATIC GLASS
Min. Amb. Temp.	-40°C
Max. Amb. Temp.	+70°C

Reference Standards and Directives

Certification and approval marks CE, UKCA

Directives 2009/125/EC (ERP), 2011/65/EU (RoHS), 2012/19/EU (WEEE), 2014/35/EU (LVD), Reg. EU 2019/2020 (EcoDesign)

Reference Standards EN 60598-1:2015, EN 60598-1:2015/A1:2018, EN 60598-1:2015/AC:2015, EN 60598-1:2015/AC:2016, EN 60598-1:2015/AC:2017, EN 60598-2-1:1989, EN IEC 63000:2018

Equipment Included

The images are purely indicative. The indicated values of luminous flux and declared power have tolerances of +/- 7%. Palazzoli reserves the right to make changes without notice.