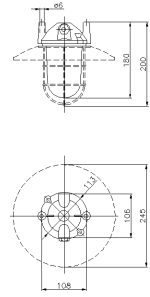




SERIES RINO
WELL FIXTURE
CODE 810071



Datasheet

Specifications

| | |
|-------------------------|--------------------------------|
| Net Weight | 0.806 KG |
| Shock resistance | IK10 according to IEC/EN 62262 |
| Frequency | 50/60Hz |
| IP Protection degree | IP65 |
| Rated operating voltage | 230V CA-CC |
| Manufacturing material | Aluminum alloy |
| Insulation Class | I |
| Lamp power | 60W |
| Lampholder type | E27 |
| Dimensions | 200X182 mm |
| Hole type | M20 |
| Optics | Symmetrical |
| Diffuser type | TRANSPARENT PRISMATIC GLASS |
| Min. Amb. Temp. | -40°C |
| Max. Amb. Temp. | +70°C |
| Surface finishing | PAINTED GREY RAL7035 |

Reference Standards and Directives

Certification and approval marks CE, UKCA

Directives 2009/125/EC (ERP), 2011/65/EU (RoHS), 2012/19/EU (WEEE), 2014/35/EU (LVD), Reg. EU 2019/2020 (EcoDesign)

Reference Standards EN 60598-1:2015, EN 60598-1:2015/A1:2018, EN 60598-1:2015/AC:2015, EN 60598-1:2015/AC:2016, EN 60598-1:2015/AC:2017, EN 60598-2-1:1989, EN IEC 63000:2018

Equipment Included

The images are purely indicative. The indicated values of luminous flux and declared power have tolerances of +/- 7%. Palazzoli reserves the right to make changes without notice.