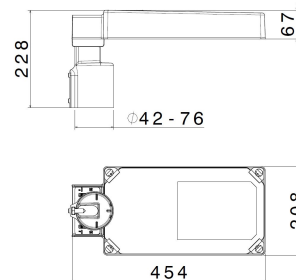




SERIES FLIGHT
ROADWAY LIGHT
CODE 803271



Model Code : FLIGHT RS2-TGL-45-28-STA-00-70-30-0620-ST1-00-100-000

Datasheet

Lighting characteristics

Output flux	8,151 lm
Luminous flux (TJ=25°C)	9,781 lm
Luminaire power	53 W
Output efficiency	142 lm/W
Color temperature	3000K
Optics type	Ultra bright aluminium reflector

Optics Street narrow ST

CRI CRI >= 70 (typical - tolerances according to EN62717)

Color shift 4 MacAdam Step

Photobiological risk EN 62471 RG0 - Exempt Group

Flicker free < 1%

Life time L80 B10 @150.000H Tq=25°C

Mechanical characteristics

Manufacturing material	Marine aluminium alloy (EN 44300)
Treatment type	Fluorozirconic passivation
Surface finishing	Atoxic, anti UV polyester paint oven polymerized
Colour	Grey RAL 7011
Diffuser type	Extraclear tempered glass 5 mm
IP Protection degree	IP66
Shock resistance	IK09 according to IEC/EN 62262
Corrosivity category	Equivalent to C5(M)/C4(H) (ISO 12944)
Mounting system	Fixing pole D42-76mm with adjustment -20°/+20°
Net Weight	5 KG
Working Environment Temp.	Min: -40°C ;Max: +45°C
Warehousing Temperature	Min: -40°C ;Max: +70°C
Exposed surface	Lateral: 0,03 m2 - Front: 0,13 m2

Electrical characteristics

Insulation Class	II
Supply Voltage	220-240V 50/60Hz AC/DC 0/50/60Hz
Control system/dimming	Standard on-off
Surge protection	10kV common mode 10kV differential mode
Power factor	>0,95
Hole type	M20
Max conductor section	2.5 mm ²
Tightening diameter	Min 7 mm; Max 13 mm

Equipment Included -

Reference Standards and Directives

Warranty	2 years extendable to 7
Certification and approval marks	CE, UKCA, ENEC 05
Directives	2009/125/EC (ERP), 2011/65/EU (RoHS), 2012/19/EU (WEEE), 2014/30/EU (EMC), 2014/35/EU (LVD), Reg. EU 2019/2020 (EcoDesign)
Reference Standards	EN 60598-2-3:2003, EN 60598-2-3:2003/A1:2011, EN 60598-2-3:2003/AC:2005, EN 61000-3-2:2014, EN 61000-3-3:2013, EN 61547:2009, EN 62311:2008, EN 62471:2008, EN 62493:2015, EN IEC 55015:2019, EN IEC 55015:2019/A11:2020, EN IEC 60598-1:2021, EN IEC 60598-1:2021/A11:2022, EN IEC 63000:2018, IEC TR 62778:2014

The images are purely indicative. The indicated values of luminous flux and declared power have tolerances of +/- 7%. Palazzoli reserves the right to make changes without notice.