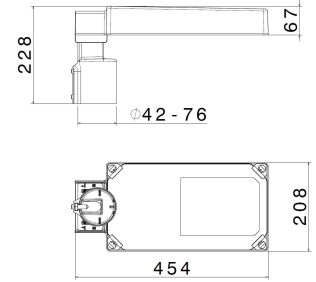
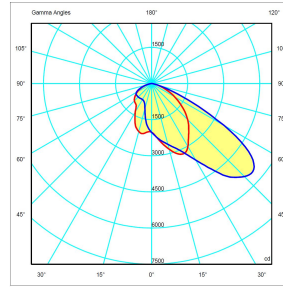




SERIES FLIGHT
ROADWAY LIGHT
CODE 803124



Model Code : FLIGHT RS2-TGL-45-2A-STA-00-70-30-0800-P06-00-100-000



Datasheet

Lighting characteristics

| | |
|-------------------------------|---|
| Output flux | 7,250 lm |
| Luminous flux (TJ=25°C) | 8,700 lm |
| Luminaire power | 58 W |
| Output efficiency | 125 lm/W |
| Color temperature | 3000K |
| Optics type | Multilenses with circular refractors |
| Optics | Pedestrian crossing DX |
| CRI | CRI >= 70 (typical - tolerances according to EN62717) |
| Color shift | 4 MacAdam Step |
| Photobiological risk EN 62471 | RG0 - Exempt Group |
| Flicker free | < 1% |
| Life time | L80 B10 @150.000H Tq=25°C |

Mechanical characteristics

| | |
|---------------------------|--|
| Manufacturing material | Marine aluminium alloy (EN 44300) |
| Treatment type | Fluorozirconic passivation |
| Surface finishing | Atoxic, anti UV polyester paint oven polymerized |
| Colour | Grey RAL 7011 |
| Diffuser type | Extraclear tempered glass 5 mm |
| IP Protection degree | IP66 |
| Shock resistance | IK09 according to IEC/EN 62262 |
| Corrosivity category | Equivalent to C5(M)/C4(H) (ISO 12944) |
| Mounting system | Fixing pole D42-76mm with adjustment -20°/+20° |
| Net Weight | 5 KG |
| Working Environment Temp. | Min: -40°C ;Max: +45°C |
| Warehousing Temperature | Min: -40°C ;Max: +70°C |
| Exposed surface | Lateral: 0,03 m2 - Front: 0,13 m2 |

Electrical characteristics

| | |
|------------------------|---|
| Insulation Class | II |
| Supply Voltage | 220-240V 50/60Hz AC/DC 0/50/60Hz |
| Control system/dimming | Standard on-off |
| Surge protection | 10kV common mode 10kV differential mode |
| Power factor | >0,95 |
| Hole type | M20 |
| Max conductor section | 2.5 mm ² |
| Tightening diameter | Min 7 mm; Max 13 mm |
| Equipment Included | - |

Reference Standards and Directives

| | |
|----------------------------------|---|
| Warranty | 2 years extendable to 7 |
| Certification and approval marks | CE, UKCA |
| Directives | 2009/125/EC (ERP), 2011/65/EU (RoHS), 2012/19/EU (WEEE), 2014/30/EU (EMC), 2014/35/EU (LVD), Reg. EU 2019/2020 (EcoDesign) |
| Reference Standards | EN 60598-2-3:2003, EN 60598-2-3:2003/A1:2011, EN 60598-2-3:2003/AC:2005, EN 61000-3-2:2014, EN 61000-3-3:2013, EN 61547:2009, EN 62311:2008, EN 62471:2008, EN 62493:2015, EN IEC 55015:2019, EN IEC 55015:2019/A11:2020, EN IEC 60598-1:2021, EN IEC 60598-1:2021/A11:2022, EN IEC 63000:2018, IEC TR 62778:2014 |

The images are purely indicative. The indicated values of luminous flux and declared power have tolerances of +/- 7%. Palazzoli reserves the right to make changes without notice.