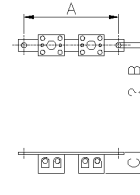




**SERIES CONTACT  
TERMINAL BLOCK  
CODE 532747**



Codici	A (mm)	B (mm)	C (mm)	testo della vite che sporge dalla morsettera (mm)
532725	70	4,75	19,5	-
532735	70	4,75	24,5	-
532745	93	4,75 x 7 (foro obliquo)	28,2	-
532743	100	4,75	25,2	28,2
532748	175	4,75	25,5	-
532755	70	4,75	22,5	-
532765	93	4,75 x 7 (foro obliquo)	26,2	-
532768	175	4,75	30	-



### Datasheet

#### Specifications

Connecting Terminals	Double side-by-side terminals
Manufacturing material	Ceramic
Contact material	Brass
Terminals type	Screw - direct tightening
No. poles for section	4x16 mm <sup>2</sup>
Conductors section (Cu)	Min: 6 ;Max: 16 mm <sup>2</sup>
Terminal tightening torque	1,2 Nm
Rated current	76A
Rated operating voltage	450V ●
Rated impul. withstand voltage	6,000
Functional maintenance	830°C 120' (IEC 60331-1) E30 - E60 - E90 (DIN 4102-12)
Working Environment Temp.	Min: -50°C ;Max: +85°C
Warehousing Temperature	Min: -50°C ;Max: +100°C
Net Weight	0.11 KG

#### Reference Standards and Directives

Directives	2011/65/EU (RoHS)2012/19/EU (WEEE)2014/35/EU (LVD)
Reference Standards	EN 60999-1:2000EN IEC 63000:2018

The images are purely indicative. Palazzoli reserves the right to make changes without notice.