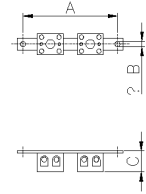


**SERIES CONTACT
TERMINAL BLOCK
CODE 532735**



Codici	A (mm)	B (mm)	C (mm)	testo della vite che sporge dalla morsettiera (mm)
532725	70	4,75	19,5	-
532735	70	4,75	24,5	-
532745	98	4,75 x 7 (foro ø4,0)	28,5	-
532747	100	4,75	25,2	28,2
532748	175	4,75	25,2	-
532755	70	4,75	24,5	-
532765	98	4,75 x 7 (foro ø4,0)	28,5	-
532768	175	4,75	30	-



Datasheet

Specifications

Net Weight	61 G
Rated operating voltage	400V
Connecting Terminals	Ceramic terminal block single contact
No. poles for section	4x6 mm ²
Rated impul. withstand voltage	6,000 V

Reference Standards and Directives

Certification and approval marks UKCA, CE

Directives 2011/65/EU (RoHS), 2012/19/EU (WEEE),
2014/35/EU (LVD)

Reference Standards EN 60999-1:2000, EN IEC 63000:2018

The images are purely indicative. Palazzoli reserves the right to make changes without notice.