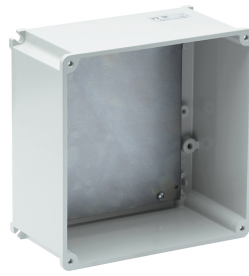




**SERIES ALUBOX**  
**BOX FOR ENCLOSURE**  
**CODE 521420**



## Datasheet

### Electrical characteristics


Rated operating voltage	-
-------------------------	---

### Mechanical characteristics

Manufacturing material	Marine aluminium alloy (EN 44300)
------------------------	-----------------------------------

Color	Grey RAL 7035
-------	---------------

Height Box	105 mm
Cover height	0 mm
Cover type	-

Hole type	-
-----------	---

Window type	-
-------------	---

IP Protection degree	IP66
----------------------	------

Resistance to Glow wire	-
-------------------------	---

Flame rating according UL94	-
-----------------------------	---

Working Environment Temp.	Min: ;Max:
---------------------------	------------

Warehousing Temperature	Min: ;Max:
-------------------------	------------

Dimensions	295X295X105 mm
------------	----------------

Net Weight	3.4 KG
------------	--------

### Reference Standards and Directives

Certification and approval marks	CE, UKCA
----------------------------------	----------

Directives	2014/35/EU (LVD)
------------	------------------

Reference Standards	EN 60670-1:2005, EN 60670-1:2005/A1:2013, EN 60670-1:2005/AC:2007, EN 60670-1:2005/AC:2010, EN 60670-22:2006, EN 62208:2011
---------------------	---

The images are purely indicative. Palazzoli reserves the right to make changes without notice.