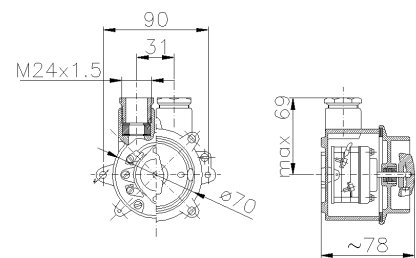




**SERIES NAVE
TWO-WAY SWITCH
CODE 232628**



Datasheet

Electrical characteristics

Rated current	10A
Supply Voltage	250V~ 50/60Hz
Poles	2P
Rated insulation voltage	-
Insulation Class	I
CAM layout	-
Function Apparatus Control	Two way switches
Type of protection	None

Mechanical characteristics

Manufacturing material	Brass
Treatment type	-
Surface finishing	-
Color	Grey RAL 7040
Execution	Wall mounting
Dimensions	90X104X78 mm
Depth	-
Front-plate dimension	-
Hole type	M24
IP Protection degree	IP66
Additional IPdegree protection	-
Shock resistance	IK08 according to IEC/EN 62262
Resistance to Glow wire	-
Flame rating according UL94	-
Corrosivity category	Equivalent to C3(M)/C2(H) (ISO 12944)
Net Weight	0.95 KG
Working Environment Temp.	Min: -40°C ;Max: +70°C
Warehousing Temperature	Min: -50°C ;Max: +80°C

Technical data switch

Thermal current	16 A
Rated short-circuit current	-
Terminals type	Screw - indirect clamping
Conductors section (Cu)	Min: 1 mm ² ;Max: 2.5 mm ²
Terminal tightening torque	1 Nm
Auxiliary status contacts	-
Padlockable handle	-
Operating category	-

Reference Standards and Directives

Certification and approval marks

Directives 2014/35/EU (LVD)

Reference Standards EN 60529:1991, EN 60529:1991/A1:2000, EN 60529:1991/A2:2013, EN 60947-1:2007, EN 60947-1:2007/A1:2011, EN 60947-1:2007/A2:2014, EN 60947-3:2009, EN 60947-3:2009/A1:2012, EN 60947-3:2009/A2:2015, UNAV 2162:1985

The images are purely indicative. Palazzoli reserves the right to make changes without notice.