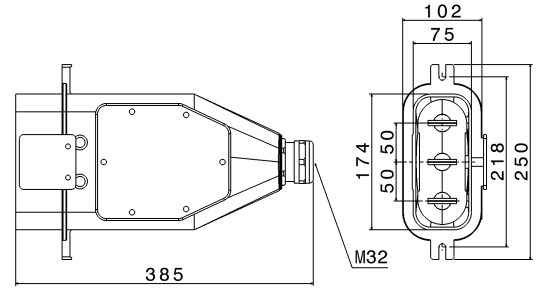




**SERIES TUNNEL LED
PLUG**
CODE 151890



Datasheet

Electrical characteristics

Rated current	63A
Supply Voltage	600-690V 50/60Hz●
Poles	3P+ $\frac{1}{2}$
Clock Position	-
Rated insulation voltage	690 V
Signal plug inserted	-

Reference Standards and Directives

Certification and approval marks	UKCA, CE, INTEK FIRE
Directives	2011/65/EU (RoHS), 2012/19/EU (WEEE), 2014/35/EU (LVD)
Reference Standards	CEI 64-20/V1:2024, CEI 64-20:2023, EN IEC 60309-1:2022, EN IEC 60309 -1:2022/AC:2023-06, EN IEC 63000:2018

Mechanical characteristics

Manufacturing material	Marine aluminium alloy (EN 44300)
Alveolus/plugs treatment	-
Color	Blue RAL 5015
Tightening diameter	11 \div 21 mm
Execution	Mobile
IP Protection degree	IP66
Additional IPdegree protection	-
Shock resistance	IK10 according to IEC/EN 62262
Resistance to Glow wire	960°C (Live contact)
Flame rating according UL94	V-0 (Live contacts)
Terminals type	Screw - direct tightening
Conductors section (Cu)	Min: 16 mm ² ;Max: 70 mm ²
Terminal tightening torque	3 Nm
Net Weight	4.33 KG
Working Environment Temp.	Min: -25°C ;Max: +50°C
Warehousing Temperature	Min: -30°C ;Max: +70°C

The images are purely indicative. Palazzoli reserves the right to make changes without notice.