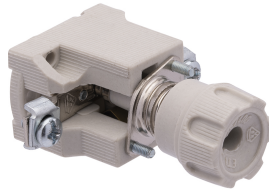




**SERIES FIREBOX
FUSE
CODE 151792**



Datasheet

Specifications

Net Weight	0.11 KG
Fuse Type	D01
Rated current	16A

Reference Standards and Directives

Certification and approval marks CE, UKCA

Directives 2014/35/EU (LVD)

Reference Standards EN 60269-1/A1:2009, EN 60269-1/A2:2014, EN 60269-1:2007, HD 60269-3:2010, HD 60269-3:2010/A1:2013

The images are purely indicative. Palazzoli reserves the right to make changes without notice.