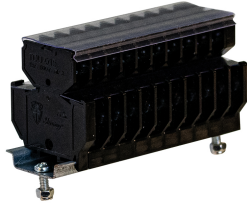




**SERIES FIREBOX
TERMINAL BLOCK
CODE 151791**



Datasheet

Specifications

Connecting Terminals	Double clamp connected
Manufacturing material	High resistance technopolymer
Contact material	Nickel plated brass
Terminals type	Screw - direct tightening
No. poles for section	20x1 mm ²
Conductors section (Cu)	Min: 0,34 ;Max: 1 mm ²
Terminal tightening torque	0,5 Nm
Rated current	15A
Rated operating voltage	600V
Rated impul. withstand voltage	0
Functional maintenance	E30 (DIN 4102-12)
Working Environment Temp.	Min: -40°C ;Max: +70°C
Warehousing Temperature	Min: -50°C ;Max: +90°C
Net Weight	0.21 KG

Reference Standards and Directives

Directives	2011/65/EU (RoHS)2012/19/EU (WEEE)2014/35/EU (LVD)
Reference Standards	EN 60947-1:2007EN 60947-7-1:2009EN IEC 63000:2018

The images are purely indicative. Palazzoli reserves the right to make changes without notice.