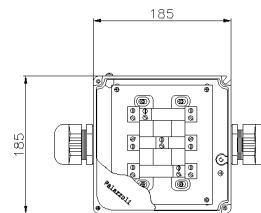
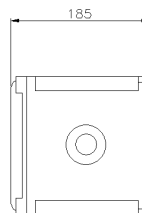




**SERIES TUNNEL LED  
ENCLOSURE**

**CODE 151553**



### Datasheet

#### Electrical characteristics

Insulation Class	I
Rated insulation voltage	-
Rated operating voltage	-
Dissipable Power	-

#### Mechanical characteristics

Manufacturing material	Aluminum alloy
Treatment type	-
Surface finishing	-
Color	Grey RAL 7035 (Base), Blue RAL 5012 (Cover)
Execution	Wall mounting
Height Box	95 mm
Cover height	10 mm
Cover type	Blind
N. of modules on DIN rail	-
Hole type	M40
Window type	-
IP Protection degree	IP66
Additional IPdegree protection	-
Shock resistance	IK10 according to IEC/EN 62262
Resistance to Glow wire	-
Flame rating according UL94	-
Corrosivity category	C4 (ISO 12944)
Working Environment Temp.	Min: -40°C ;Max: +70°C
Warehousing Temperature	Min: -50°C ;Max: +90°C
Dimensions	185X185X185 mm
Internal dimensions	-
Net Weight	1.88 KG

#### Reference Standards and Directives

Certification and approval marks INTEK FIRE, CE, UKCA, IMQ FIRE

Directives 2011/65/EU (RoHS), 2012/19/EU (WEEE), 2014/35/EU (LVD)

Reference Standards CEI 64-20:2023, EN 60670-1:2005, EN 60670-1:2005/A1:2013, EN 60670-1:2005/AC:2007, EN 60670-1:2005/AC:2010, EN 60670-22:2006, EN IEC 60331-1:2019, EN IEC 63000:2018

The images are purely indicative. Palazzoli reserves the right to make changes without notice.