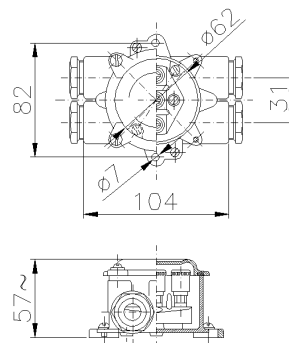




**SERIES NAVE
ENCLOSURE
CODE 115628**



Datasheet

Electrical characteristics

Insulation Class	I
Rated insulation voltage	-
Rated operating voltage	-
Dissipable Power	-

Mechanical characteristics

Manufacturing material	Brass
Treatment type	-
Surface finishing	-
Color	Grey RAL 7040
Execution	Wall mounting
Height Box	42 mm
Cover height	15 mm
Cover type	Blind
N. of modules on DIN rail	-
Hole type	M24
Window type	-
IP Protection degree	IP66
Additional IPdegree protection	-
Shock resistance	-
Resistance to Glow wire	-
Flame rating according UL94	-
Corrosivity category	-
Working Environment Temp.	Min: -40°C ;Max: +70°C
Warehousing Temperature	Min: -50°C ;Max: +80°C
Dimensions	82X144X57 mm
Internal dimensions	Ø 62 mm
Net Weight	0.75 KG

Reference Standards and Directives

Certification and approval marks

Directives 2011/65/EU (RoHS), 2012/19/EU (WEEE)

Reference Standards EN 60529:1991, EN 60529:1991/A1:2000, EN IEC 63000:2018, UNAV 2161:1985

The images are purely indicative. Palazzoli reserves the right to make changes without notice.