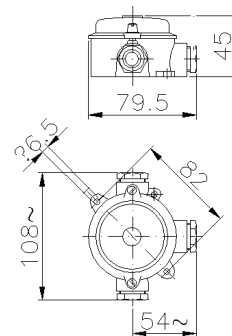




**SERIES RONDO' ENCLOSURE**  
**CODE 112040**



### Datasheet

#### Electrical characteristics

Insulation Class	I
Rated insulation voltage	-
Rated operating voltage	-
Dissipable Power	2,5W

#### Mechanical characteristics

Manufacturing material	Aluminum alloy
Treatment type	Fluorozirconic passivation
Surface finishing	Non-toxic polyester paint anti UV curing in the oven
Color	Blue RAL 5012 (Cover), Grey RAL 7035 (Base)
Execution	Wall mounting
Height Box	31 mm
Cover height	14 mm
Cover type	Blind
N. of modules on DIN rail	-
Hole type	M20
Window type	-
IP Protection degree	IP54
Additional IPdegree protection	-
Shock resistance	IK10 according to IEC/EN 62262
Resistance to Glow wire	-
Flame rating according UL94	-
Corrosivity category	-
Working Environment Temp.	Min: -25°C ;Max: +70°C
Warehousing Temperature	Min: -50°C ;Max: +80°C
Dimensions	140X140X45 mm
Internal dimensions	Ø 62 mm
Net Weight	0.18 KG

#### Reference Standards and Directives

Certification and approval marks CE, UKCA

Directives 2014/35/EU (LVD)

Reference Standards EN 60670-1:2005, EN 60670-1:2005/A1:2013, EN 60670-1:2005/AC:2007, EN 60670-1:2005/AC:2010, EN 60670-22:2006

The images are purely indicative. Palazzoli reserves the right to make changes without notice.