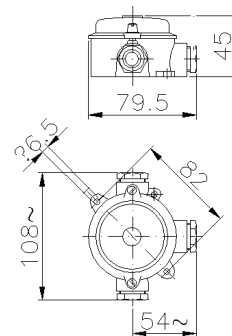




SERIES RONDO' ENCLOSURE
CODE 112030



Datasheet

Electrical characteristics

| | |
|--------------------------|------|
| Insulation Class | I |
| Rated insulation voltage | - |
| Rated operating voltage | - |
| Dissipable Power | 2,5W |

Mechanical characteristics

| | |
|--------------------------------|--|
| Manufacturing material | Aluminum alloy |
| Treatment type | Fluorozirconic passivation |
| Surface finishing | Non-toxic polyester paint anti UV curing in the oven |
| Color | Blue RAL 5012 (Cover), Grey RAL 7035 (Base) |
| Execution | Wall mounting |
| Height Box | 31 mm |
| Cover height | 14 mm |
| Cover type | Blind |
| N. of modules on DIN rail | - |
| Hole type | M20 |
| Window type | - |
| IP Protection degree | IP54 |
| Additional IPdegree protection | - |
| Shock resistance | IK10 according to IEC/EN 62262 |
| Resistance to Glow wire | - |
| Flame rating according UL94 | - |
| Corrosivity category | - |
| Working Environment Temp. | Min: -25°C ;Max: +70°C |
| Warehousing Temperature | Min: -50°C ;Max: +80°C |
| Dimensions | 115X140X45 mm |
| Internal dimensions | Ø 62 mm |
| Net Weight | 0.19 KG |

Reference Standards and Directives

Certification and approval marks CE, UKCA

Directives 2014/35/EU (LVD)

Reference Standards EN 60670-1:2005, EN 60670-1:2005/A1:2013, EN 60670-1:2005/AC:2007, EN 60670-1:2005/AC:2010, EN 60670-22:2006

The images are purely indicative. Palazzoli reserves the right to make changes without notice.